

# Spare part list

## DIA 300 diamond core drill

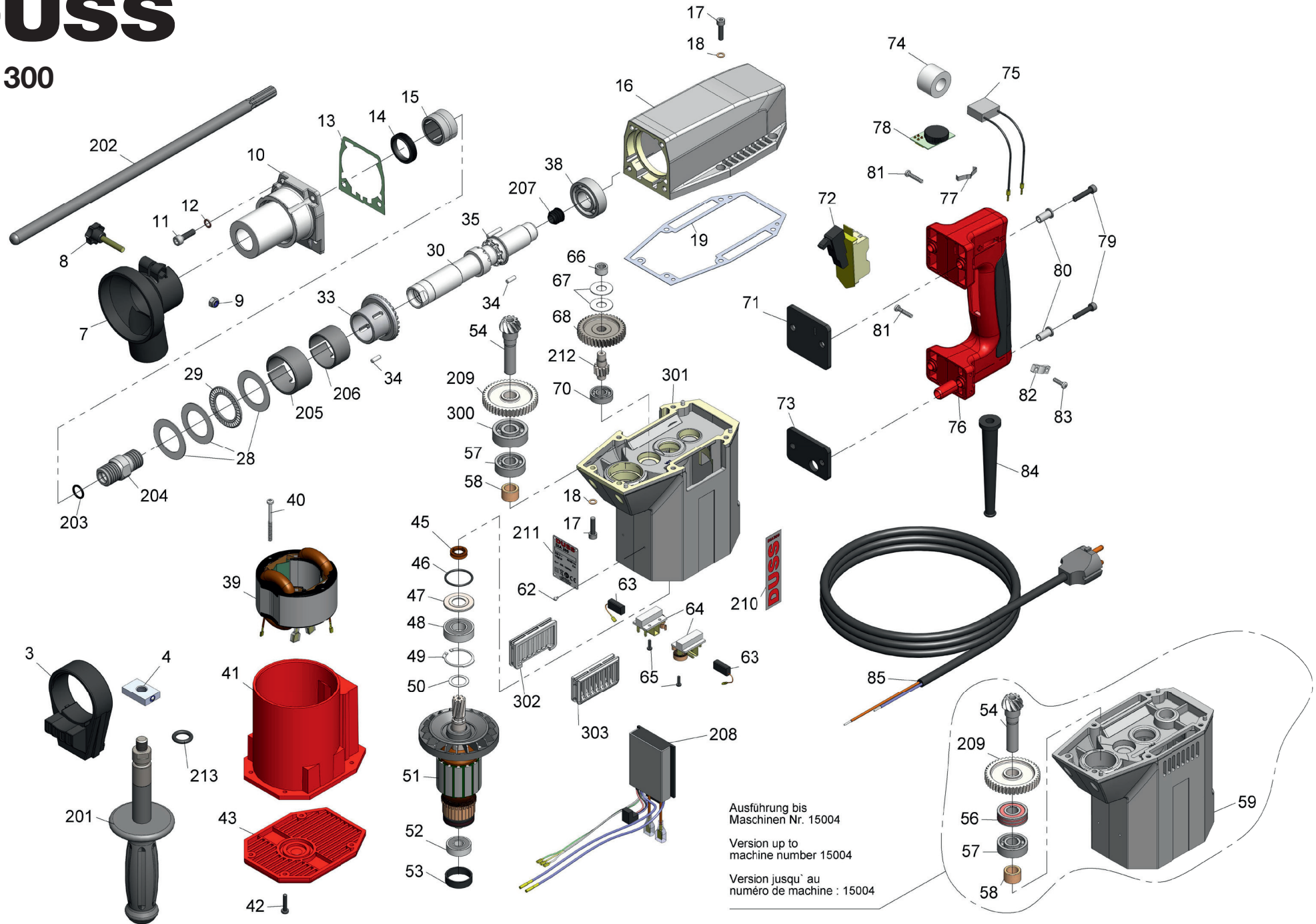
# DUSS

Description	Order-No.	Quantity
Clamping collar with jaw	DIA300-3	1
Nut M12	DIA300-4	1
Suction head SK61	DIA300-7	1
Star knob	DIA300-8	1
Hexagon nut M6	DIA300-9	1
Front cover	DIA300-10	1
Cheese head screw M6x20	DIA300-11	4
Copper washer M6	DIA300-12	4
Gasket	DIA300-13	1
Dust seal	DIA300-14	1
Roller bearing	DIA300-15	1
Cylinder housing	DIA300-16	1
Cheese head screw M5x20	DIA300-17	6
Copper washer M5	DIA300-18	6
Gasket	DIA300-19	1
Washer	DIA300-28	3
Needle thrust bearing	DIA300-29	1
Tool bit driver	DIA300-30	1
Bevel gear	DIA300-33	1
Roller 4x11,8	DIA300-34	14
Roller 4x19,8	DIA300-35	10
Ball bearing	DIA300-38	1
Field, 230V	DIA300-39	1
Lens head screw 4x48	DIA300-40	2
Insulating housing	DIA300-41	1
Lens head screw M4x20	DIA300-42	4
Motor cover	DIA300-43	1
V-ring seal	DIA300-45	1
O-ring seal 26x2	DIA300-46	1
Plain washer	DIA300-47	1
Ball bearing	DIA300-48	1
Retaining ring	DIA300-49	1
Washer	DIA300-50	1
Armature, 230V	DIA300-51	1
Ball bearing	DIA300-52	1
Rubber sleeve	DIA300-53	1
Bevel gear pinion	DIA300-54	1
Ball bearing	DIA300-56	1
Ball bearing	DIA300-57	1
Sleeve bearing	DIA300-58	1
Grooved pin	DIA300-62	4
Carbon brush	DIA300-63	2
Brush holder	DIA300-64	2
Lens head screw 3x10	DIA300-65	4
Needle bush	DIA300-66	1
Washer	DIA300-67	2
Layshaft gear	DIA300-68	1
Ball bearing	DIA300-70	1
Damper cylinder housing	DIA300-71	1
Switch	DIA300-72	1

Description	Order-No.	Quantity
Damper motor housing	DIA300-73	1
Foam rubber	DIA300-74	1
Capacitor	DIA300-75	1
Switch handle	DIA300-76	1
Spring	DIA300-77	1
Potentiometer	DIA300-78	1
Cheese head screw M5x25	DIA300-79	4
Spacer	DIA300-80	4
Lens head screw 4x20	DIA300-81	2
Cord clamp	DIA300-82	1
Lens head screw 4x14	DIA300-83	2
Cord sleeve	DIA300-84	1
Cord and plug	DIA300-85	1
Side handle	DIA300-201	1
Centring rod	DIA300-202	1
O-ring seal 12x2	DIA300-203	1
Threaded nipple	DIA300-204	1
Outer clutch spring	DIA300-205	1
Inner clutch spring	DIA300-206	1
Sealing plug	DIA300-207	1
Electronics ass'y	DIA300-208	1
Gear wheel	DIA300-209	1
DUSS DIA300 sticker	DIA300-210	2
DIA300 nameplate	DIA300-211	1
Pinion	DIA300-212	1
O-ring seal 14x4	DIA300-213	1
Ball bearing	DIA300-300	1
Motor housing	DIA300-301	1
Ventilation insert, right	DIA300-302	1
Ventilation insert, left	DIA300-303	1

# DUSS

DIA 300



Ausführung bis  
Maschinen Nr. 15004  
Version up to  
machine number 15004  
Version jusqu' au  
numéro de machine : 15004